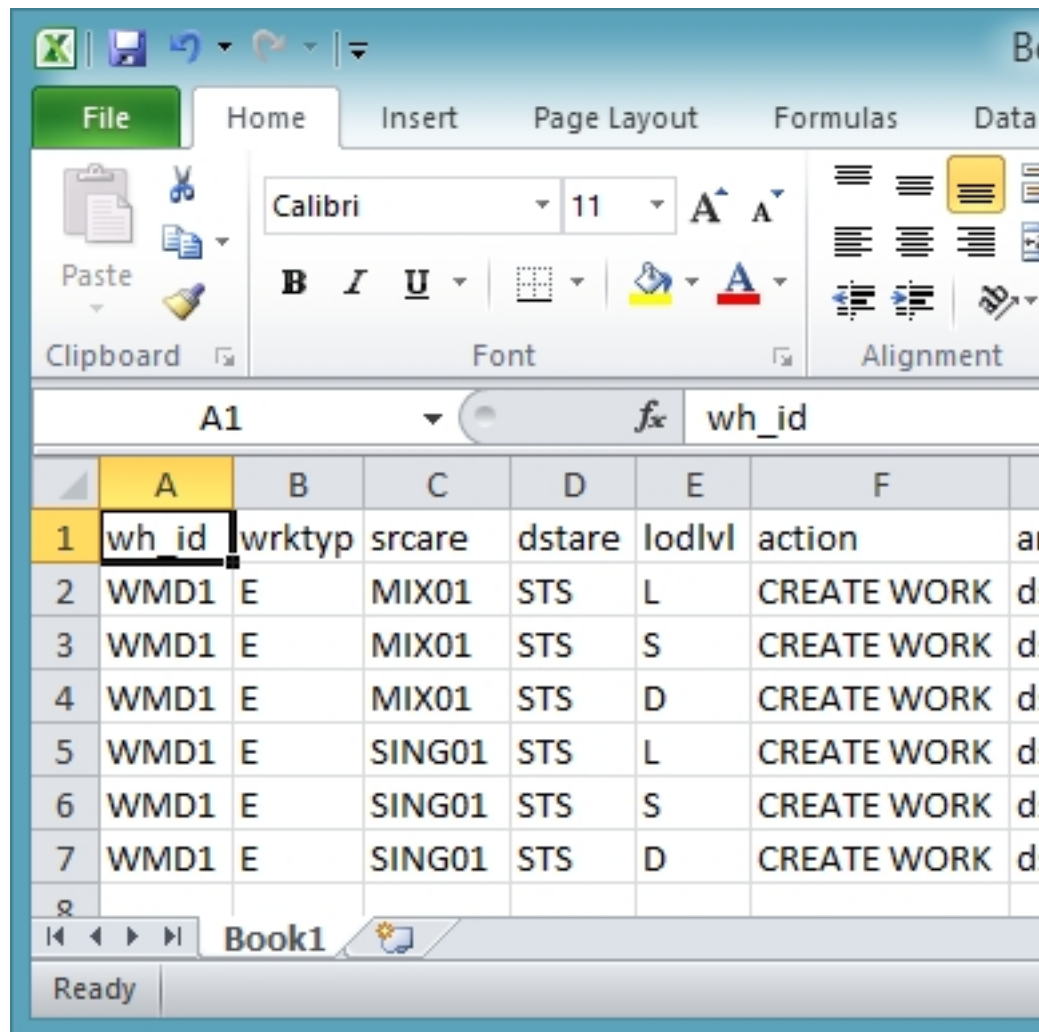


Here is an alternate way to load records with minimal Excel data manipulation – this example also leverages the “create area release rule policy” command:

1. Create and save a .csv file with required data including the field headers on your local machine.



	A	B	C	D	E	F
1	wh_id	wrktyp	srcare	dstare	lodlvl	action
2	WMD1	E	MIX01	STS	L	CREATE WORK
3	WMD1	E	MIX01	STS	S	CREATE WORK
4	WMD1	E	MIX01	STS	D	CREATE WORK
5	WMD1	E	SING01	STS	L	CREATE WORK
6	WMD1	E	SING01	STS	S	CREATE WORK
7	WMD1	E	SING01	STS	D	CREATE WORK

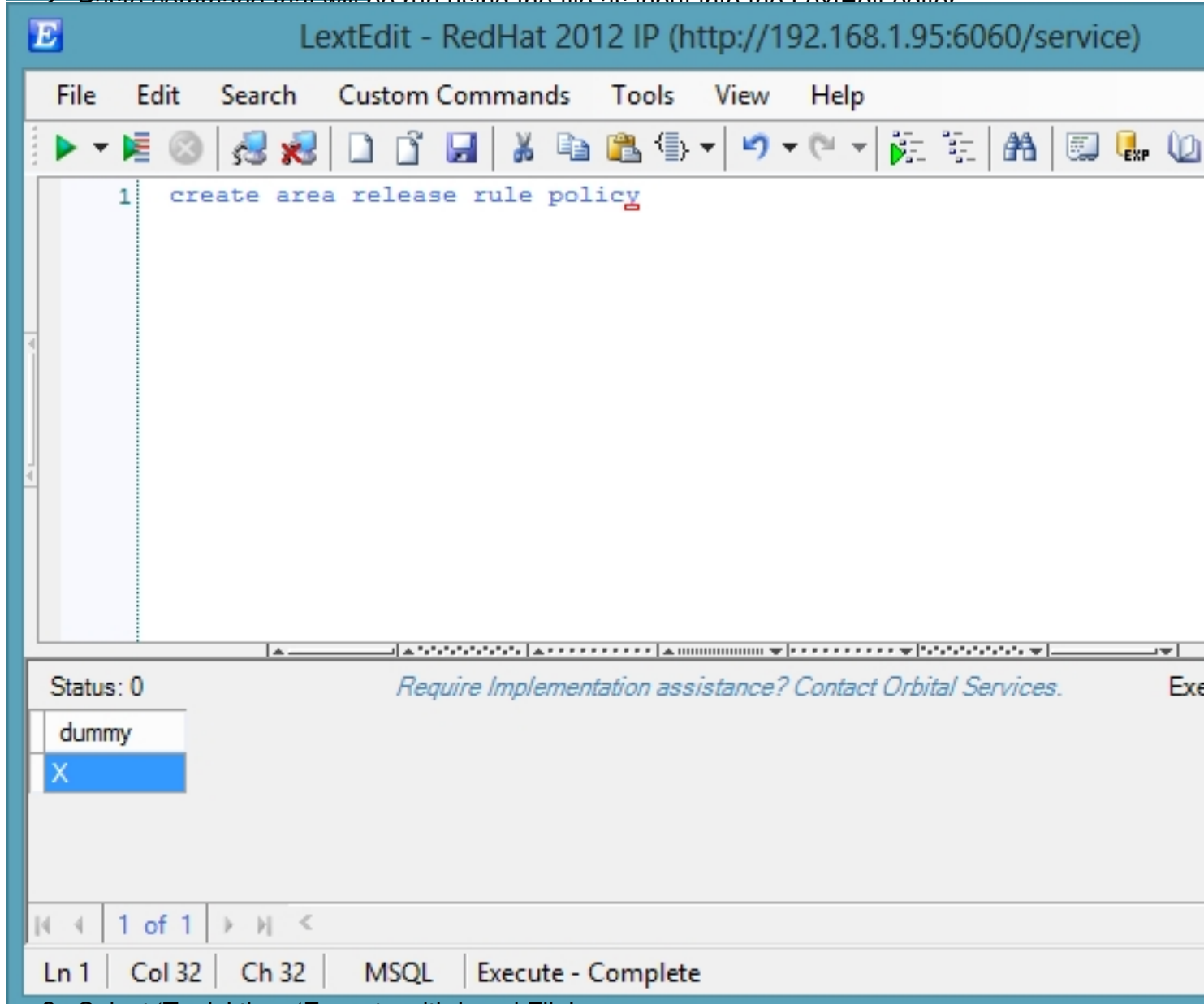
Or

"Execute with Local File..." using Local Data

Tuesday, 24 March 2009 14:39 - Last Updated Wednesday, 21 August 2013 16:23

```
Book1 - Notepad
File Edit Format View Help
wh_id,wrktyp,srcare,dstare,lodlvl,action,arguments,opcode,baspri,offset
WPD1,E,MIX01,STS,L,CREATE WORK,"dstloc_wnkzon,srcloc_stoloc",EMRPL,10,10
WPD1,E,MIX01,STS,S,CREATE WORK,"dstloc_wnkzon,srcloc_stoloc",EMRPL,10,10
WPD1,E,MIX01,STS,D,CREATE WORK,"dstloc_wnkzon,srcloc_stoloc",EMRPL,10,10
WPD1,E,SING01,STS,L,CREATE WORK,"dstloc_wnkzon,srcloc_stoloc",EMRPL,10,10
WPD1,E,SING01,STS,S,CREATE WORK,"dstloc_wnkzon,srcloc_stoloc",EMRPL,10,10
WPD1,E,SING01,STS,D,CREATE WORK,"dstloc_wnkzon,srcloc_stoloc",EMRPL,10,10
```

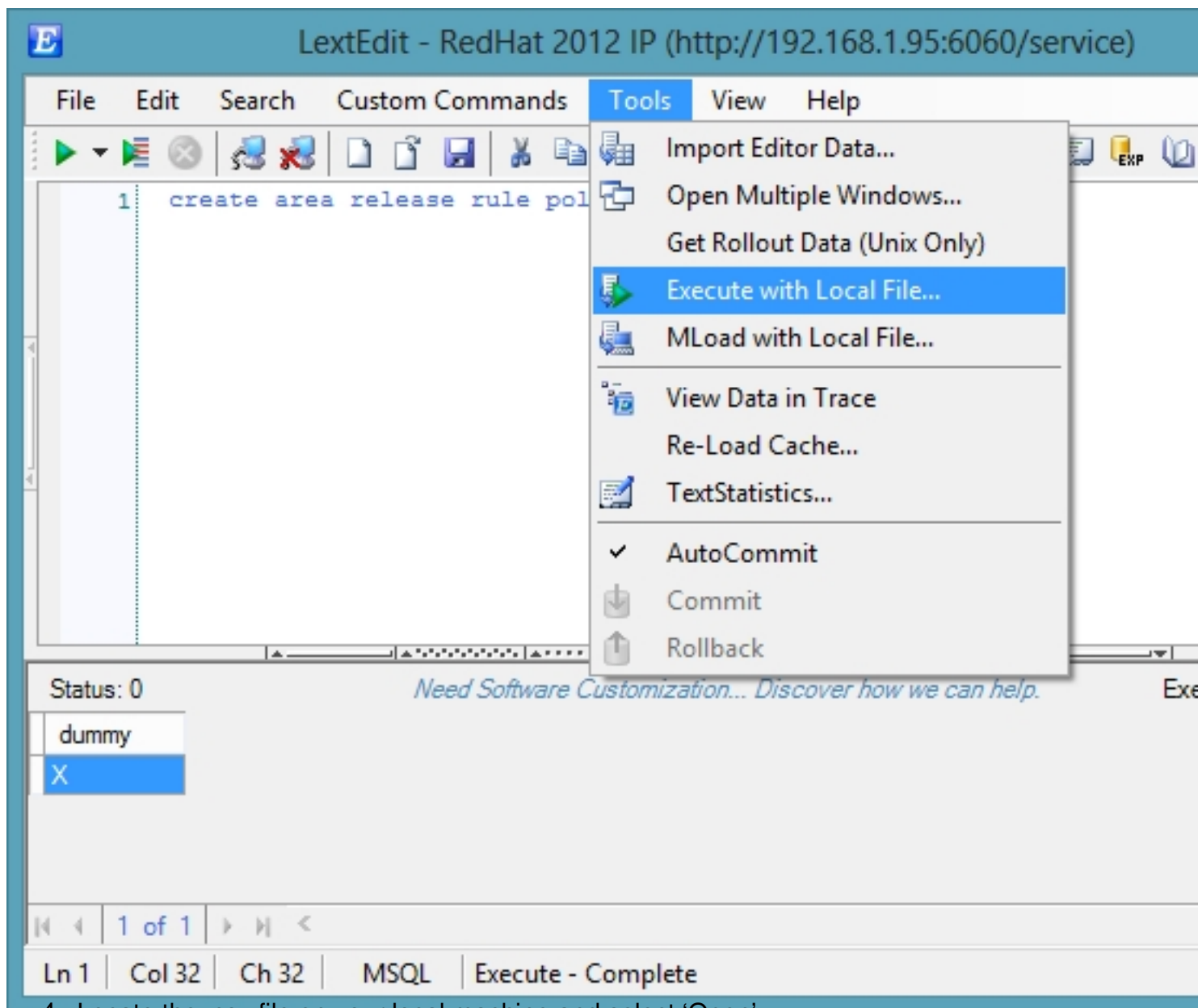
2. Paste command that will be run using the file as input into the LextEdit editor



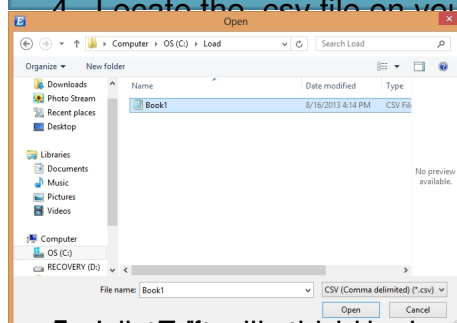
3. Select 'Tools' then 'Execute with Local File'

"Execute with Local File..." using Local Data

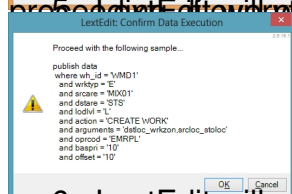
Tuesday, 24 March 2009 14:39 - Last Updated Wednesday, 21 August 2013 16:23



4. Locate the .csv file on your local machine and select 'Open'



5. LextEdit will prompt you to provide a sample of select data example for your validation prior to



6. LextEdit will execute the command on screen for all records in single execution.

"Execute with Local File..." using Local Data

Tuesday, 24 March 2009 14:39 - Last Updated Wednesday, 21 August 2013 16:23

